

# Contents

## Overviews

[Introduction](#)

[Files](#)

[Copyright and disclaimer](#)

[Problems](#)

## Dialog boxes

[Spelling](#)

[Options](#)

[Edit Custom Dictionary](#)

NOTE: The spellchk.dll module used by this program includes an interface that allows it to be integrated into **any** program that requires spelling checking facilities. For more details contact me at **spellchk@quinion.demon.co.uk** or see the file devel201.zip available via ftp from ftp.demon.co.uk/pub/ibmpc/windows/spell.

## Files

You should have received the following:

- readme.1st - Latest information and license. Make sure you have read this.
- setup.exe - Setup and installation program.
- bulddic.exe - Add to or create main dictionaries.
- spelledt.dll - Driver used to enable the hot key.
- spell.hlp - This help file.
- spellchk.dll - Generic module to supply spelling checking.
- fileid\_diz - Program description.

Plus at least one of the following dictionary files:

- ukeng.scd - UK English dictionary
- useng.scd - US English dictionary
- german.scd - German dictionary (In beta release)

If any of these files are missing please obtain a new copy. If you have internet access you can obtain the latest version plus additional dictionary files by ftp from:

ftp.demon.co.uk                   /pub/ibmpc/windows/spell

## Introduction

This program is designed to provide spelling checker facilities to any application that uses the standard edit control (or compatible). The checker is enabled using a predefined short cut key.

It contains a 50,000 word dictionary which has been carefully checked to ensure that it contains only valid words, although there are omissions. This dictionary is continually being updated thanks to user support. Please send your word lists to **spellchk@quinion.demon.co.uk** with the subject **WordList**.

Bug lists and any suggestions for the next version can be sent to the same address.

## Dialog: Spelling



Click on the part of the image you want more information on.

Whenever a word is not found in the dictionary this box will appear and ask you what you want to do about it.

You have three options:

- 1) Ignore the word by pressing the ignore or All button
- 2) Change the word by:
  - Typing a new word into the *Change To* box and pressing *Change*
  - Double clicking on a suggestion
- 3) Add the word to the current user dictionary

Displays the word that was not found

Type in the text that you wish to change the word to

The list of suggested words. This will be auto filled if you have selected *Auto Suggest*

Use this to select your current user dictionary from the list



Add the *Not Found* word to the current user dictionary

Produce a list of suggestions for the word in the *Change To* box

Open the options dialog box

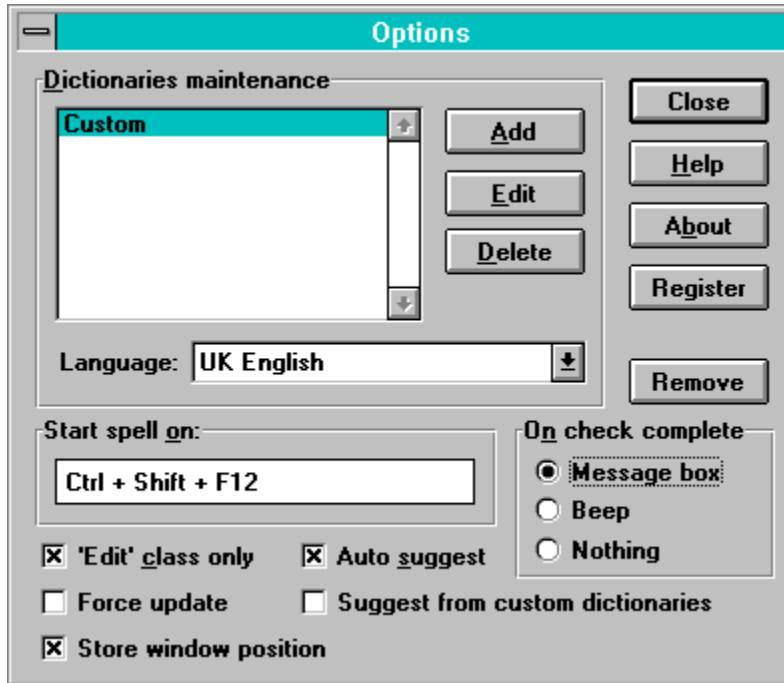
Ignore the current word and go onto the next

Ignore the current word and any future occurrences (during this session)

Change the current word to the one in the *Change To* box

Undo the last operation

## Dialog: Options



Click on the part of the image you want more information on.

The options box is available via the Spelling box or by running the *Setup* program.



A list of all the current custom dictionaries

Add a new custom dictionary. You will be asked to select the file name, then the Edit Custom Dictionary dialog will appear.

Edit the current custom dictionary. The Edit Custom Dictionary dialog will appear.

Delete the current custom dictionary.

Select the current language from the dictionaries available.

This box has been removed - this version is released as freeware.

Allows you to remove/install the driver. You can only remove or install the program when you have opened the options box using the setup program. If you make a change in the status you will be asked to restart windows and the changes will not come into effect until you do.

Select the shortcut key to start the spell checker. Just select the control and press the key combination.



Choose if you want spell to auto fill the suggest box

The program can search the custom dictionaries for suggestions, but on some machines this may be slow. Try it and see.

Only allow the spelling checker to check controls with the *edit* class. If you disable this option the checker will attempt to check ANY control regardless of class, which may possibly cause a crash. However often a control is compatible with the *edit* class and will work even though it is not an edit control (for instance the edit boxes inside MS Access and most VB controls). **Use with care.**

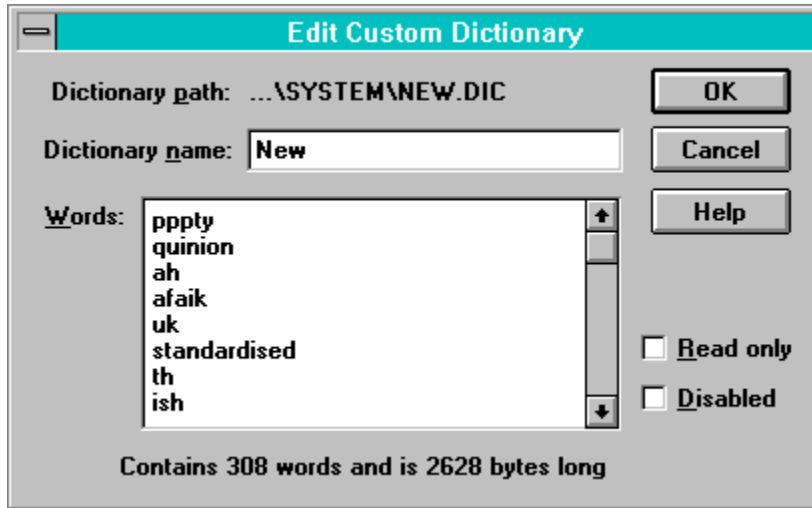
Maintain the position of the spelling checker windows between sessions.

Some non-standard edit controls do not update properly when a word is changed. You can use this option to force a redraw each time a change is made. This option will cause the edit control being used to flicker and should only be used if you have no choice.

The MS Access edit controls are one example of a control that needs this.

When the spelling check is complete the program can either put up a message telling you, beep, or do nothing. Your choice.

## Dialog: Edit Custom Dictionaries



Click on the part of the image you want more information on.

Use this to change the name of the dictionary and to edit the words in the custom dictionary.

The file path where the custom dictionary is stored



The name of the dictionary

A list of all the words in the custom dictionary. You can use this box to edit what is in the custom dictionary. If you want to send in a list of extra words the easiest way is just to pull the words straight out of the list into a text file using the clipboard. Use Ctrl-Insert to copy to the clipboard from the edit control. Please do not attempt to spell check this list.

Make the custom dictionary read only. It will still be checked to see if a word is in it but you will not be able to add to it.

Tells you how many words are in the dictionary and how many bytes it takes up.

Temporarily disable the use of this dictionary. It will be ignored completely.

## **About freeware**

### **What is freeware?**

Freeware is software that has been released into the public domain and may be freely copied and used as long as no charge is made (except minimal handling costs). This package has been released into the public domain in an attempt to improve the literacy level of communication on the net, and to remove all excuse for bad spelling :-)

If you like this product, please write to me and tell me so.

## **Copyright and disclaimer**

Spell checker for edit boxes has been written by and is copyright © 1994 by Brian Quinion. All rights reserved.

Whilst every care has been taken in the compilation of this application, it is provided 'as is' and neither the author nor the publishers shall be held responsible for any error, omission or consequential loss.

Spell Checker for Edit Boxes is freeware.

## **Problems (or the FAQ)**

Q: Do I need to copy the program to the startup group to get it to run every time?

A: You don't need to, the program installs itself using a different method.

Q: I moved the program and now I can't get it to work?

A: The directory pointers that it has installed no longer work. You will need to running setup, and press the 'Remove' button. You should then close the box and restarting windows. Restart windows and run setup again, this time press install (it will be where the remove button was before). You will be asked to restart windows again.

Q: I can get the spelling checker to start using the hot key, it just keep bring up the setup box.

A: It is not possible to do a spelling check while the setup box is open. The two interact and I have put in code to stop them running at the same time.

These are the most asked questions of the moment, I'll try to keep it up to date



